

# Welcome to 4<sup>th</sup> Grade Curriculum Night

# Our Fourth Grade Team

- ▶ Maestra/Miss Angelica Gonzalez
- ▶ Mrs. Kristan Appleford
- ▶ Maestra Maria Barajas

We love open lines of communication!

- ▶ [agonzalez@kyrene.org](mailto:agonzalez@kyrene.org)      480-541-3330
- ▶ [kappleford@Kyrene.org](mailto:kappleford@Kyrene.org)      480-541-3331
- ▶ [mbarajas@Kyrene.org](mailto:mbarajas@Kyrene.org)      480-541-3327

Other means of communication:

- ▶ Teacher emails/reminders to all parents

# **This Year's Curriculum**



# 4<sup>th</sup> Grade Math Standards

- ▶ **Number and Operations in Base Ten**
  - Understands place value for multi-digit whole numbers
  - Multi-digit addition and subtraction using the algorithm
  - Multi-digit multiplication and division using strategies
- ▶ **Operations and Algebraic Thinking**
  - Uses the 4 operations with whole numbers to solve problems
  - Factors and Multiples/basic multiplication facts!!!
  - Generate and Analyze number patterns
- ▶ **Number and Operations of Fractions**
  - Fraction and decimal equivalence, ordering, and comparing
  - Build fractions from unit fractions: Equivalent fractions
  - Adding, subtracting, and multiplying fractions and decimals
- ▶ **Measurement and Data**
  - Represents and interprets data
  - Converting units both standard and metric
  - Area and perimeter
- ▶ **Geometry**
  - Draw and identify lines and angles
  - Classify shapes by properties of their lines and angles

# **$\frac{4}{5}$ Compacted Math Standards**

- ▶ All of the fourth grade standards and...
- ▶ First half of 5th grade standards:
  - Multiplication and division of larger numbers
  - Addition and subtraction of fractions with unlike denominators
  - Multiplying with fractions
  - Classify and measure 2D figures and related formulas
- ▶ Accelerated pace

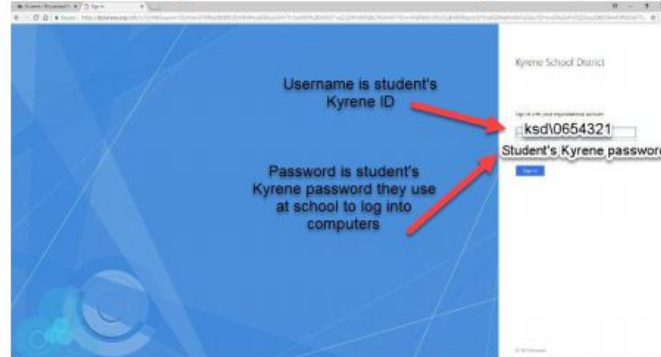


## Accessing i-Ready – At Home

1. From the Kyrene Homepage, click on **Students** and select the **Educational Resources** link.
2. Click on the i-Ready button to launch i-Ready sign-in page.



3. Click **Log in with Active Directory**. Since this is done at home, students will be required to log in with their Kyrene network user name and password.
4. **These fields may appear and function differently, depending on the browser used at home.** Enter the student's username and password in the fields.  
**\*NOTE:** If entering the username and password does not work, then enter it in this form:  
**ksd\student#** followed by the student's password. **\*\*You must use a backslash (\) not a forward slash (/). Student passwords are the same as their Kyrene computer logon password.**



5. Click **Sign In**.

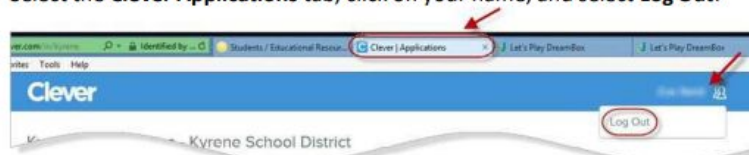
6. Click on the i-Ready button.



7. Begin using i-Ready.

When you are finished:

1. Exit i-Ready. *If on an iPad, swipe up to close the i-Ready app after every session.*
2. Select the **Clever Applications** tab, click on your name, and select **Log Out**.



### Kyrene Student Login Information

Student Name: \_\_\_\_\_

Student ID # : \_\_\_\_\_

Kyrene Password: \_\_\_\_\_





# Where can my student and I see the progress being made?

1. Log in with your student's username and password.
2. View your student's "My Progress" box.
3. Click on "Completed Work" to see your student's progress.

You and your student can monitor progress by clicking on **My Progress** in the bottom navigation bar.



On the My Progress page, you will be able to see:

1. **Time-on-Task:** The number of minutes your student has spent this week on *i-Ready Personalized Instruction*
2. **Lessons Passed:** The total number of lessons your student has passed this school year
3. **Lesson Streak:** How many lessons your student has passed in a row
4. **Completed Work:** The names and quiz scores for each of the lessons your student has taken



# Reading

## Standards:

### Daily Routine:

- Read text as a group and discuss and analyze
- Higher Level Questioning
- Students take notes in spirals
- Lengthy essay question at end of each unit as an assessment

### Informational


- Examples from text as evidence
- Inferences
- Main idea and details
- Summarize
- Analyze structure
- Vocabulary Strategies

### Literature

- Examples from text as evidence
- Key ideas and details
- Inferences
- Theme
- Summarize
- Analyze structure
- Point of view
- Connections to the text
- Vocabulary Strategies



# Academic Writing

- ▶ Constructed Response Essays in which students cite evidence from text.
  - ▶ Specific graphic organizer taught to aid in this style of writing
  - ▶ Students are expected to use appropriate punctuation, grammar, spelling.
  - ▶ Cursive is practiced daily
  - ▶ Opinion pieces, informative/explanatory, narratives, and short research and report projects are imbedded in our curriculum
- 

# Social Studies

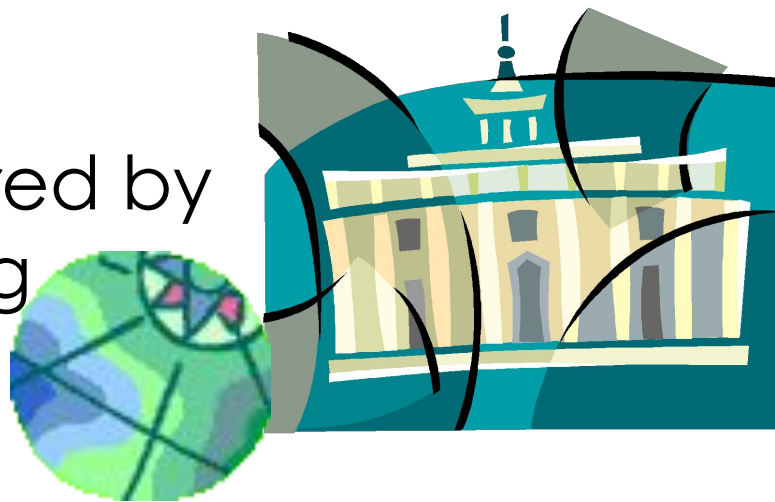
▶ Topics embedded in our ELA units :

- American Revolution
- Declaration of Independence
- Medieval History
- Famous Inventors

▶ Constitution (covered by Mrs. Gardner during library classes.)

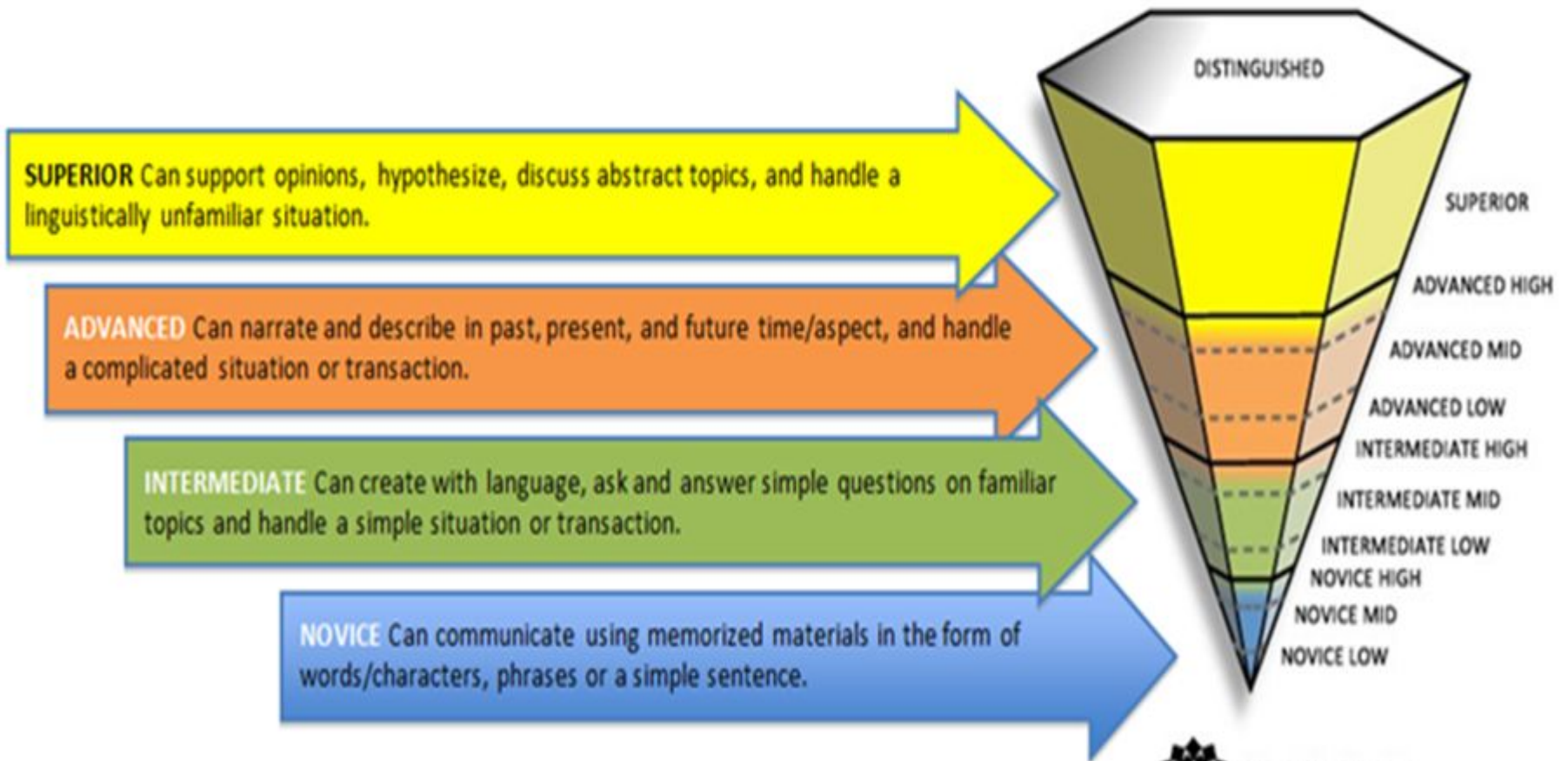


*Robert E. Lee*



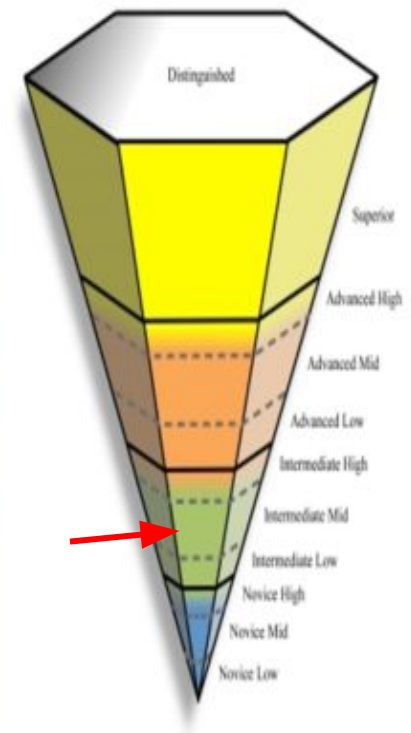
# SPANISH

## (ACTFL) Proficiency Guidelines



# Kyrene Grade level Targets

Grade Level	AAPPL	Interpersonal Mode	Presentational Modes			Interpretive Modes	
	Codes	Listening & Speaking	Speaking	Writing	Listening	Reading	
		Speaking					
8	I5/A	Intermediate High/Advance Low	Intermediate High/Advance Low	Intermediate High/Advance Low	Intermediate High/Advance Low	Intermediate High/Advance Low	
7	I5	Intermediate High	Intermediate High	Intermediate High	Intermediate High	Intermediate High	
6	I4	Intermediate Mid	Intermediate Mid	Intermediate Mid	Intermediate Mid	Intermediate Mid	
5	I3	Intermediate Mid	Intermediate Mid	Intermediate Mid	Intermediate Mid	Intermediate Mid	
4	I2	Intermediate Mid	Intermediate Mid	Intermediate Mid	Intermediate Mid	Intermediate Mid	
3	I1	Intermediate Low	Intermediate Low	Intermediate Low	Intermediate Low	Intermediate Low	
2	N4	Novice High/Intermediate Low	Novice High/Intermediate Low	Novice High/Intermediate Low	Novice High/Intermediate Low	Novice High/Intermediate Low	
1	N3	Novice Mid	Novice Mid	Novice Mid	Novice Mid	Novice Mid	
K	N2	Novice Mid	Novice Mid	Novice Mid	Novice Mid	Novice Mid	
Pre K	N1	Novice Low	Novice Low		Novice Low		



# Performance Towards Proficiency Scale

- Advanced



- Story teller or reporter

- Intermediate



- Survivor

- Novice



- Parrot



# SPANISH

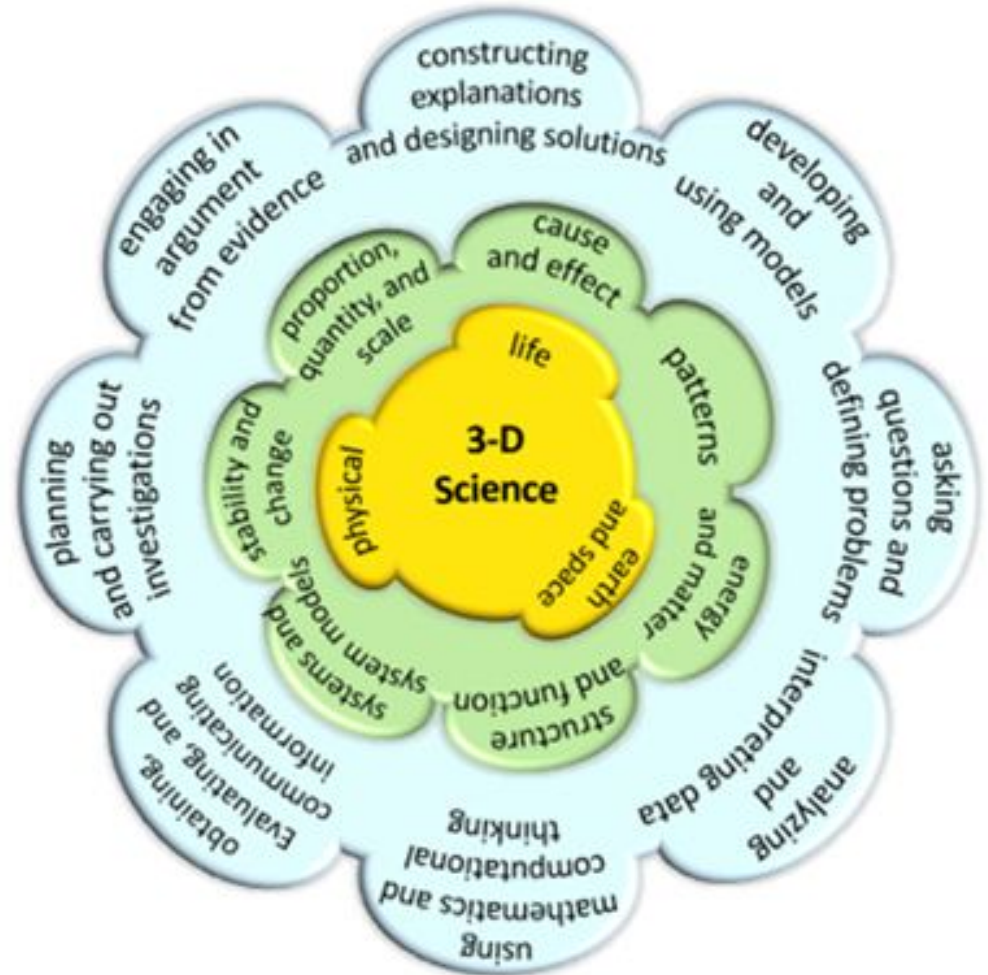
- ▶ Fiction Chapter Books
  - Brujas (Witches)
  - El Prodigioso Viaje de Edward Tulane  
(Miraculous Journey of Edward Tulane)
  
- ▶ Maravilla Readers
  - reading fluency
  - comprehension writing





# Science Units

- ▶ Water and Weather
- ▶ Animal Classification and Adaptation
- ▶ Magnetism and Electricity
- ▶ Renewable and Nonrenewable Resources
- ▶ Scientific method
- ▶ Experiments on Wednesdays



**\*Transitioning Year**

# Grades and Report Cards

- ▶ A, B, C grades on the report card this year.
- ▶ Grades entered into the gradebook are from assessments.
- ▶ Special grades will be P/D/AC
- ▶ Homework grade scored in the behavior section as P/D/AC

# Weekly Homework

- ▶ District expectation is to read every night for 20 – 30 minutes.
- ▶ Practice multiplication/division facts so they are automatic. This helps tremendously with multiplication and division of larger numbers and also work with fractions
- ▶ Math iReady practice 20-30 min daily
- ▶ Daily parent initials on Homework log! (due Fridays)
- ▶ Weekly Spanish text questions



# Thank you for Attending!

What Questions do you have?

