

# Kyrene Elementary School District

Maricopa County

Efficiency peer groups 7 and T-3, Achievement peer group 13

Legislative district(s): 18 and 27

District size / location:

Large, City

Students attending:

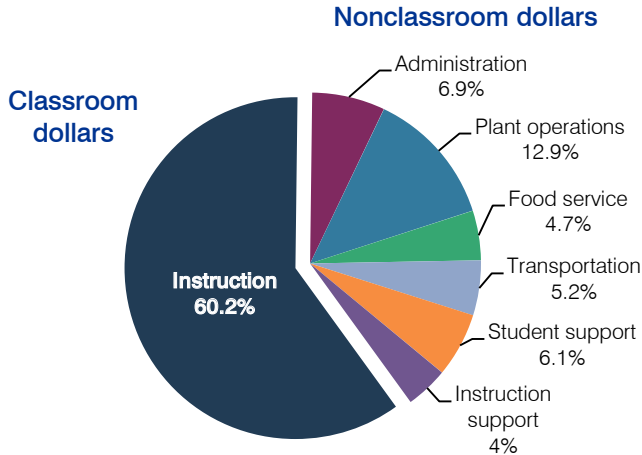
16,906

Number of schools:

25

## OPERATIONAL EFFICIENCY

### Spending by operational area



### 5-year spending trend

Total spending per pupil decreased by 6 percent. Spending in the classroom decreased from 63.5 to 60.2 percent. Spending on plant operations and transportation increased, while spending on other nonclassroom areas remained stable.

### Cost measures relative to peer averages

Operational area	Measure	District	Peer average	State average
Administration	Cost per pupil	\$475	\$695	\$736
	Students per administrator	68	67	66
Plant operations	Cost per square foot	\$5.79	\$6.05	\$6.09
	Square footage per student	152	131	152
Food service	Cost per meal equivalent	\$2.97	\$2.41	\$2.47
Transportation	Cost per mile	\$3.40	\$3.80	\$3.50
	Cost per rider	\$881	\$940	\$982

Very low Low Comparable High Very high

### Per-pupil spending by operational area

	District		Peer average	State average	National average
	2011	2012	2012	2012	2010
<b>Total</b>	<b>\$6,736</b>	<b>\$6,841</b>	<b>\$7,254</b>	<b>\$7,475</b>	<b>\$10,652</b>
<b>Classroom dollars</b>	<b>4,160</b>	<b>4,121</b>	<b>3,944</b>	<b>4,053</b>	<b>6,526</b>
<b>Nonclassroom dollars:</b>	<b>2,576</b>	<b>2,720</b>	<b>3,310</b>	<b>3,422</b>	<b>4,126</b>
Administration	463	475	695	736	1,139
Plant operations	790	882	794	928	1,012
Food service	315	318	489	382	405
Transportation	318	353	299	362	443
Student support	380	416	526	578	592
Instruction support	310	276	507	436	535

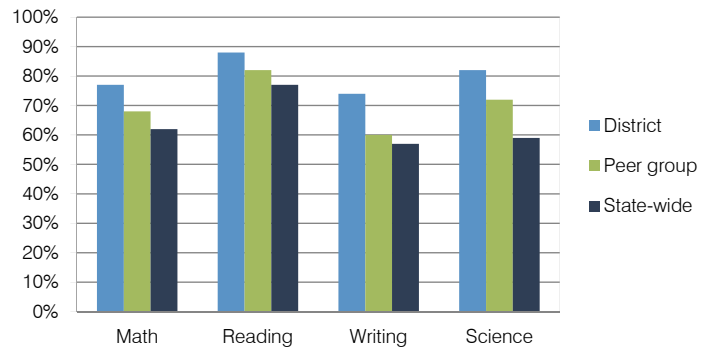
## STUDENT ACHIEVEMENT, TEACHER MEASURES, AND FINANCIAL ASSESSMENT

### ADE-reported district and school letter grades

District grade: **A**

Grade	Number of schools	Percentage of schools
A	15	60%
B	9	36%
C	1	4%
D	0	0%
F	0	0%
Not rated	0	0%

### Percentage of students who met state standards (AIMS)



### Student and teacher measures

Measure	District	Peer average	State average
Attendance rate	96%	96%	94%
Graduation rate (2011)	N/A	N/A	N/A
Poverty rate (2011)	10%	16%	25%
Students per teacher	17.9	18.2	18.1
Average teacher salary	\$47,910	\$43,760	\$45,193
Amount from Proposition 301	\$2,091	\$3,355	\$3,195
Average years of teacher experience	12.9	8.6	11.0
Percentage of teachers in first 3 years	9%	19%	16%

### Financial stress assessment

Overall financial stress level: **Low**

Measure: 2010 through 2012	Assessment
Number of students attending	Steady
Spending exceeded operating/capital budgets	No overspending
Spending increase election results	Voter-approved
Operating reserve percentage (max. 4%), trend	3.9%, Steady
Years of capital reserve held	More than 3 years
Current financial and internal control status	Compliant

