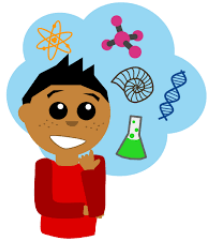


Back to School 2020-2021 – 7th Grade Newsletter

Welcome to CMS! We love our Sabercats!

Bell Schedule

Period 1	8:20am to 9:25am
Period 2	9:28am to 10:27am
Period 3	10:30am to 11:29am
Lunch P4	11:29am to 11:59am
Advisory P5	12:02pm to 12:31pm
Period 6	12:34pm to 1:33pm
Period 7	1:36pm to 2:35pm



Ms. Velazquez –
Science

gvelazquez@kyrene.org

Classroom Website:

<https://www.kyrene.org/site/Default.aspx?PageID=49932>



Mrs. Cambridge – ELA

dcambridge@kyrene.org

Classroom Website:

<https://www.kyrene.org/site/Default.aspx?PageID=46882>



Mr. Panther –
Social Studies

dpanther@kyrene.org

Classroom Website:

<https://www.kyrene.org/site/Default.aspx?PageID=37412>



Ms. Combs – Math

HCombs@kyrene.org

Classroom Website:

<https://www.kyrene.org/site/Default.aspx?PageID=49924>

For students who Have Ms. Velastegui for 2nd period Algebra her website is:

<https://www.kyrene.org/site/Default.aspx?PageID=37430>

- Technology Support
 - [Distance Learning Help Page](#)
 - If after reviewing information on the help page families are still experiencing issues, they should fill out the form linked to the “Submit Support Request” Button near the bottom of the Distance Learning Help Page.
- Zoom Access Information (see teacher directions for Zoom Integration below)
 - One link per class period for middle school
 - Zoom invite will be sent to student emails once a day from StudentVue
 - [Zoom Directions and Video for Families](#)
- Google Classroom will be done during class periods on the first day of school.

Middle School Attendance

- Teachers will take attendance each period, 10-15 minutes into the period.
- We will not mark tardies for students who are in distance learning.

RESETTING STUDENT PASSWORDS

If you have not already reset your child’s student password, please make sure that you follow the steps in the link below to set one up along with three security questions for their Kyrene network account. If you have already completed these steps, please disregard the rest of this communication.

IMPORTANT: When you are initially prompted to enter a password, please note that your temporary password has been set as **Student1**.

Please follow these instructions as soon as possible so that your children are ready for the school year: [Password Setup - Password Reset Instructions](#).

If you need assistance, reach out for help at www.kyrene.org/studentassist or leave a voicemail at 480-541-1241. Requests/calls will be returned in the order they are received. Email is the fastest and most efficient way to reach the student assist desk. Due to heavy call volume, phone calls may take several days to return.

