



Student Dress Code Guidelines

An enforced dress code will contribute to the academic environment. Just as dress codes address professional standards in the workplace, the KTA dress code promotes the purpose of academics. All students are expected to dress in a neat fashion reflecting pride in themselves and their school. It is both the parents' and child's responsibility to ensure compliance with these standards. Please see pages 12-14 of the KTA handbook for the full dress code policy.

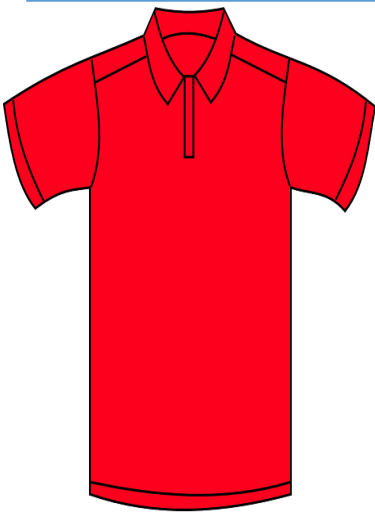
No hats, or head coverings will be worn inside the building except for required religious observance.

Hair should be **neatly groomed** and not cause distraction. Hairstyles, cuts, and extensions of **natural hair colors** are acceptable. Hair accessories may not have protrusions (ears, horns, pom poms).

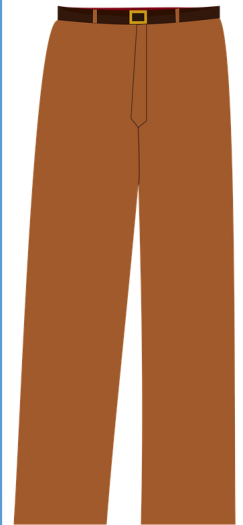


Jewelry and belts will be **non-distracting**. Piercings, except ears, are not allowed. Words or images on jewelry **must be appropriate**. Sunglasses may only be worn outside.

No makeup (K-5), tattoos, or marks on the skin except for required religious observance.



Tops must be a polo style shirt and have a collar and sleeve and must be solid **navy blue, red, or white**. **Jackets or sweaters** worn inside the building over a polo style shirt must be solid **navy blue, red, white, or purchased from KTA**. **Bottoms**, worn at the waist, must be school uniform style and fabric with pockets and be solid **navy blue or khaki color**. Bottoms can include pants, fingertip-length shorts, capris, skirts, dresses, or jumpers. Leggings may be worn under dress code appropriate bottoms in **navy blue, red, or white**. The body and undergarments shall be covered at all times.



Fridays wear School Spirit Shirts and plain, solid, blue denim bottoms with no rips or tears.

Socks must be **plain, navy blue, red, or white**. Sandals, must have a heel strap. Athletic shoes must be worn on PE days. No flip flops. No heels or platforms greater than 1 inch K-3, and 2 inches 4-8. No boots or shoes above the ankle. No shoes that distract or present a safety hazard.

