

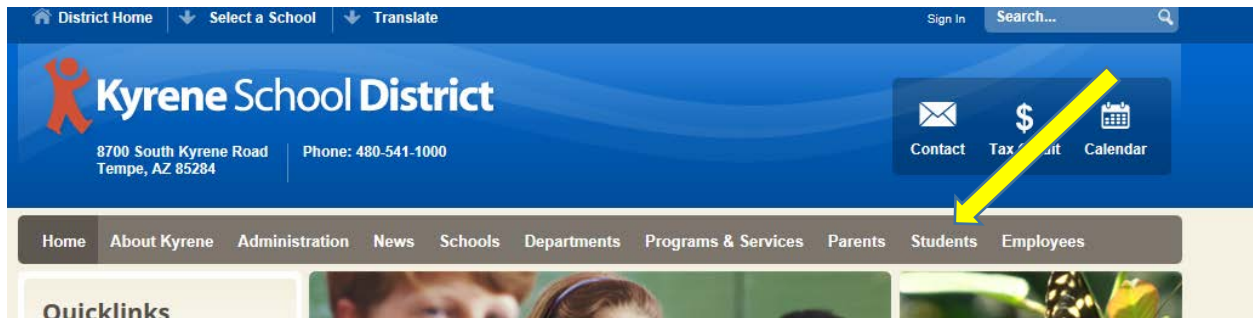
Student Directions for logging into MATHia & Cognitive Tutor software from a home computer

**Before attempting to login for the first time, please test your computer using the System Requirements Tool here: <http://online.carnegielearning.com> and disable your pop-up blockers.

Acceptable web browsers to run MATHiaX: all browsers

CognitiveTutor software: Internet Explorer, Firefox, Safari

- 1) Kyrene students must log in from www.kyrene.org. Click on “Students”



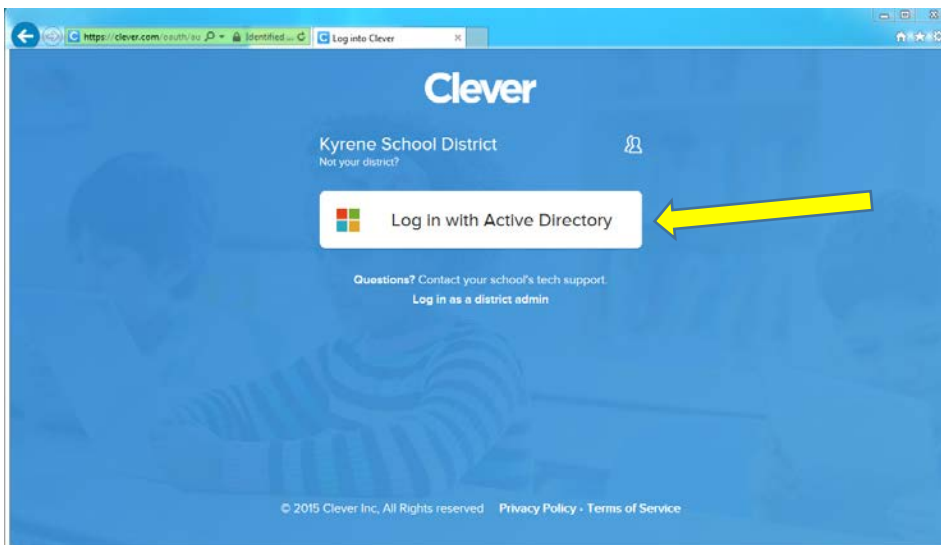
- 2) Click on “Educational Resources”



3) Click on the “Carnegie Learning Online” button

TEXTBOOK & ADDITIONAL RESOURCES		
The following resources may be specific to a class in which particular students are enrolled.		
 Arizona Department of Education Arizona State University	 Grades 6-8 Spanish	 Grades 6-8 Language Arts
 Grades K-5 Reading & Language Support	 Grades 6-8 Science & Social Studies	 Grades K-8
 Grades K-5	 Grades 4 and 6	 Grades 6-8
 Grades K-5	 Grades 6-8 open CHROME first and navigate back to this page	 Grades 6-8
 Dual Language Grades K-5	 Grades 6-8 open CHROME first and navigate back to this page	 Grades 6-8 Open in Internet Explorer Carnegie Resource Center *home logon ksd\student#

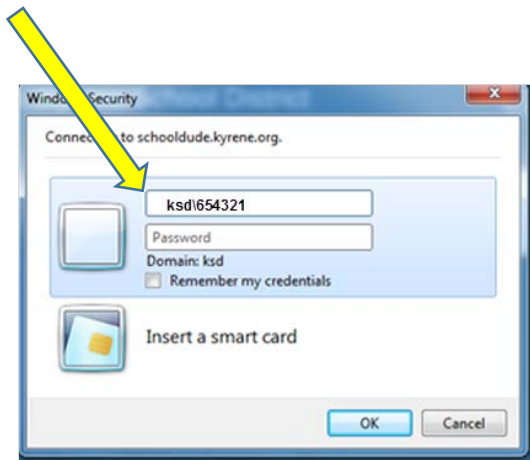
4) Click on “Log in with Active Directory”



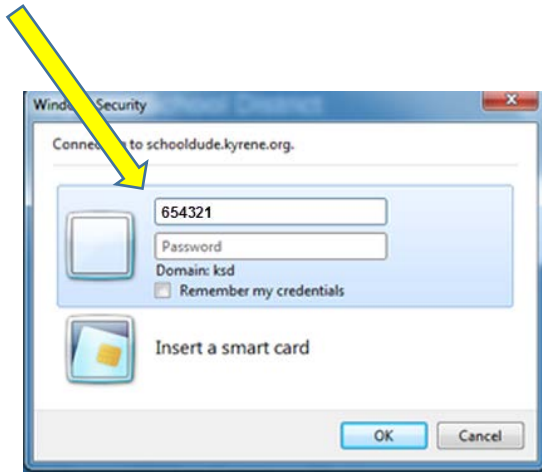
5) Type in student ID as username. For example: “654321.”

Student passwords are the same as their Kyrene computer logon password.

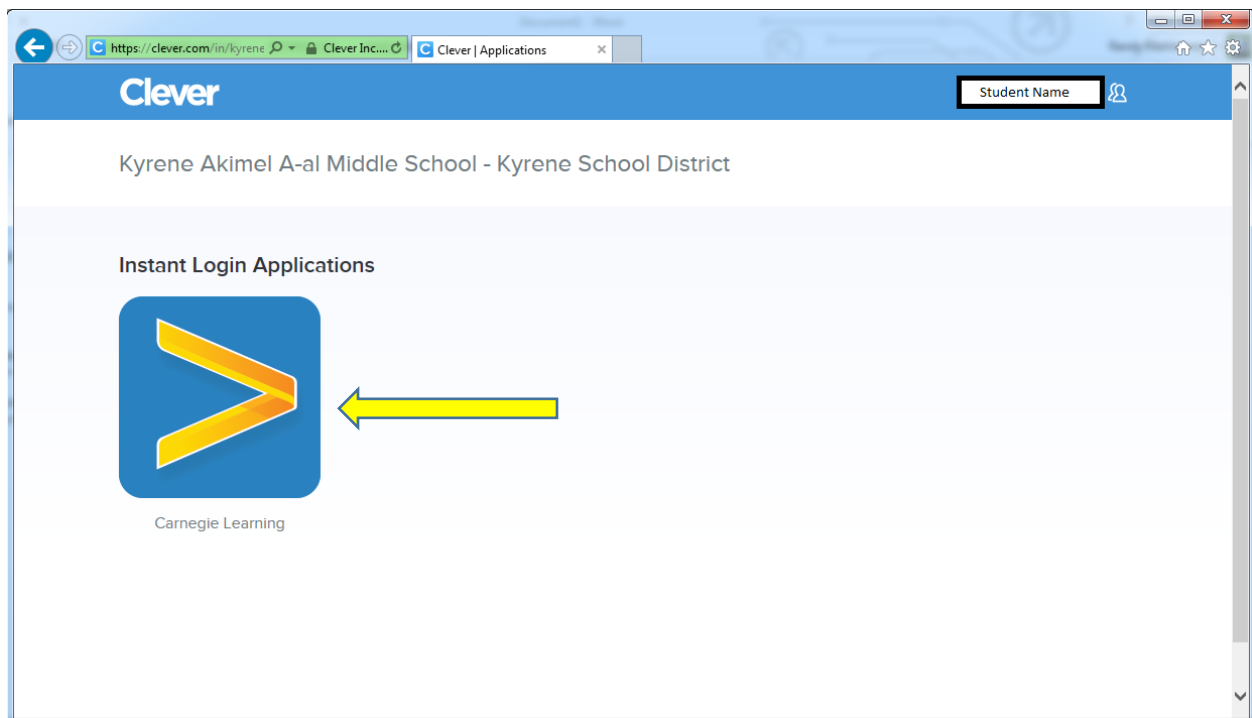
***NOTE: Some browsers may require “ksd\” **before** the ID number to connect to the Kyrene network for login access.



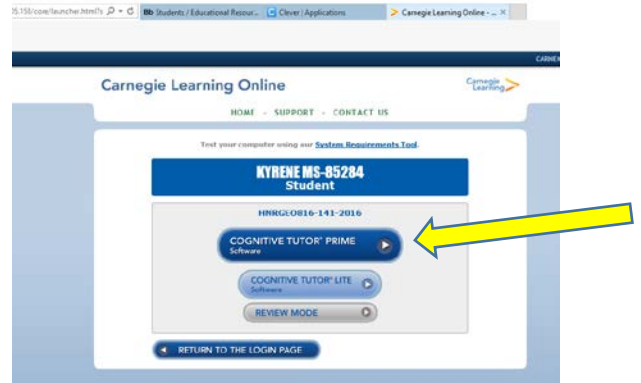
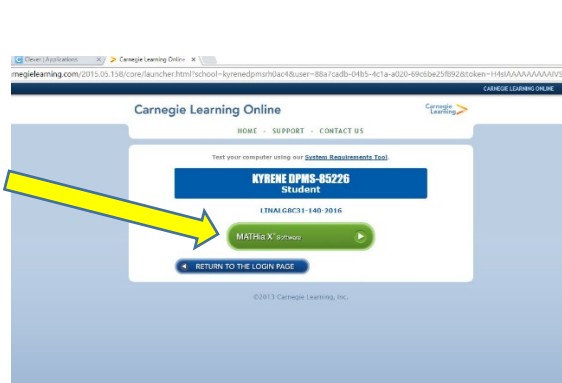
OR



- 6) Once the login is successful, they will see the Clever page with the Carnegie Learning app. Click on the Carnegie Learning button.

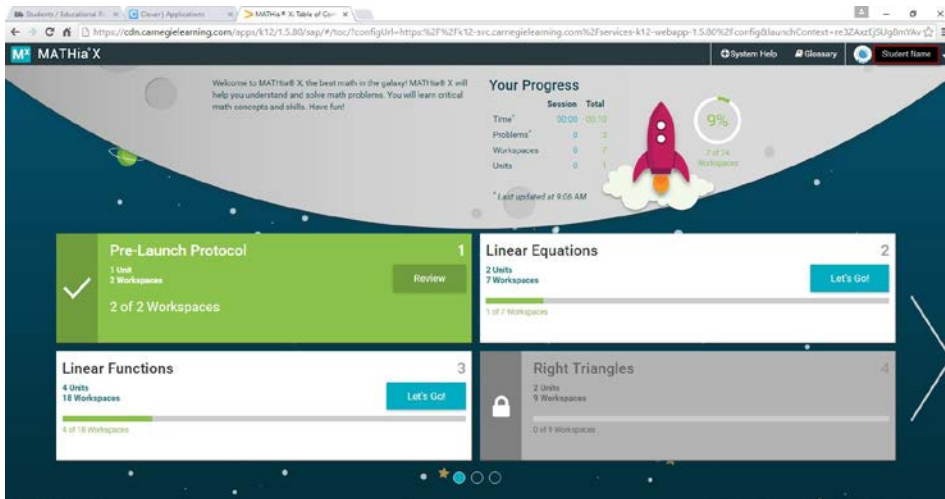


- 7) Click on the “MATHiaX” or “Cognitive Tutor Prime” software button to enter. The link is MATHia for Students in 6th, 7th, 8th, or Algebra courses, and Cognitive Tutor if student is in the Honors Geometry course.



8) Students will now see their home screen with the appropriate math modules for the course they are enrolled in.

a. MATHiaX view



b. Cognitive Tutor view

