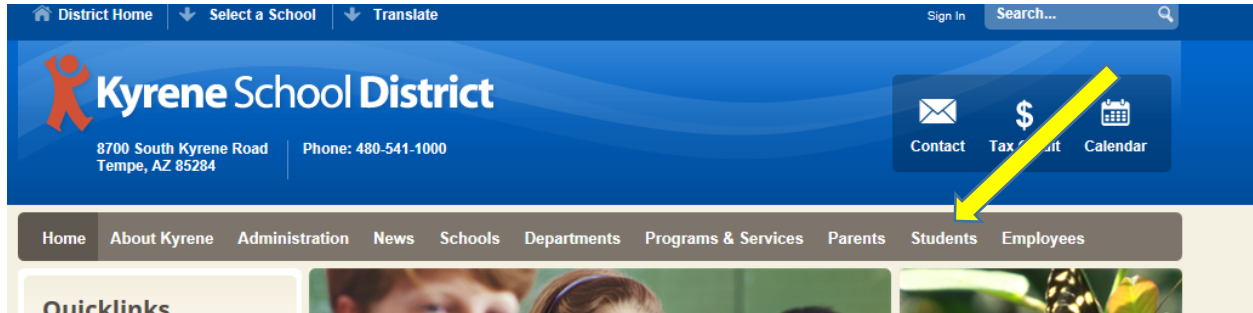
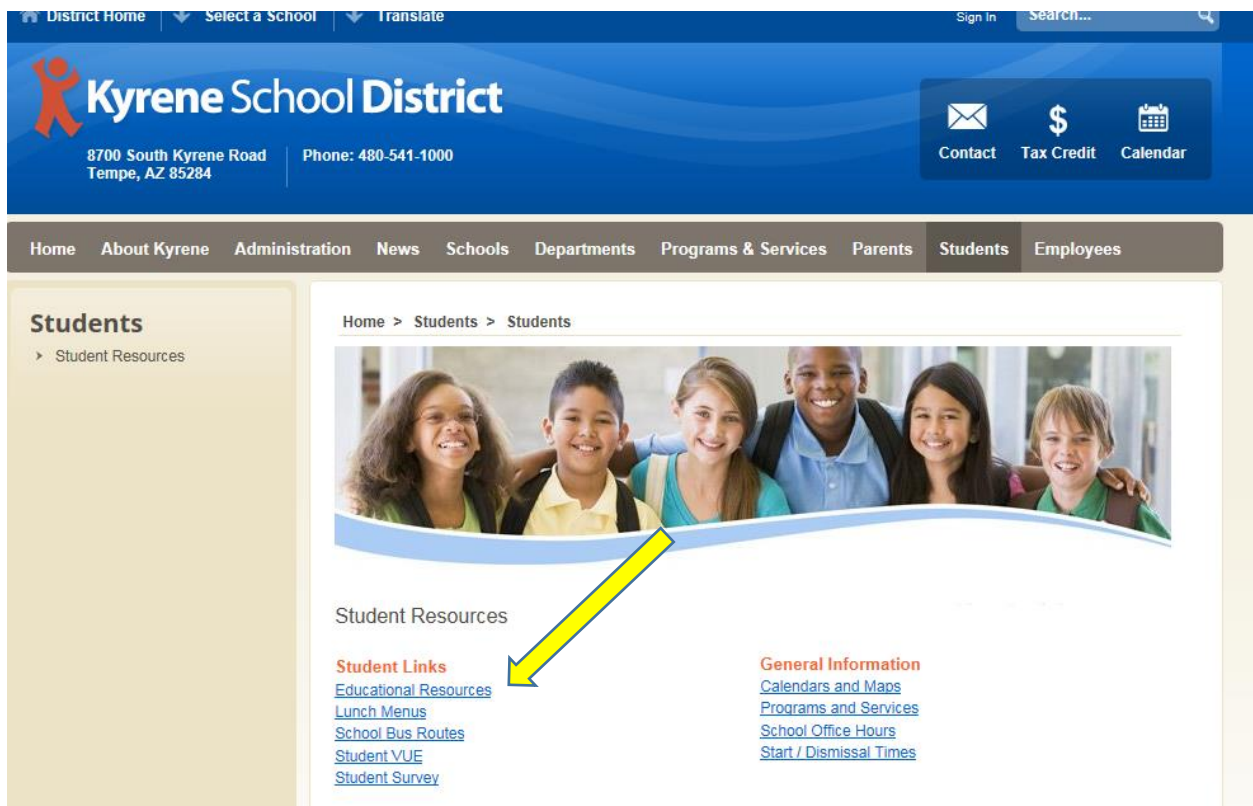


Student Directions for logging into Mathia & Cognitive Tutor software from a home computer

1) From www.kyrene.org, click on “Students”



2) Click on “Educational Resources”

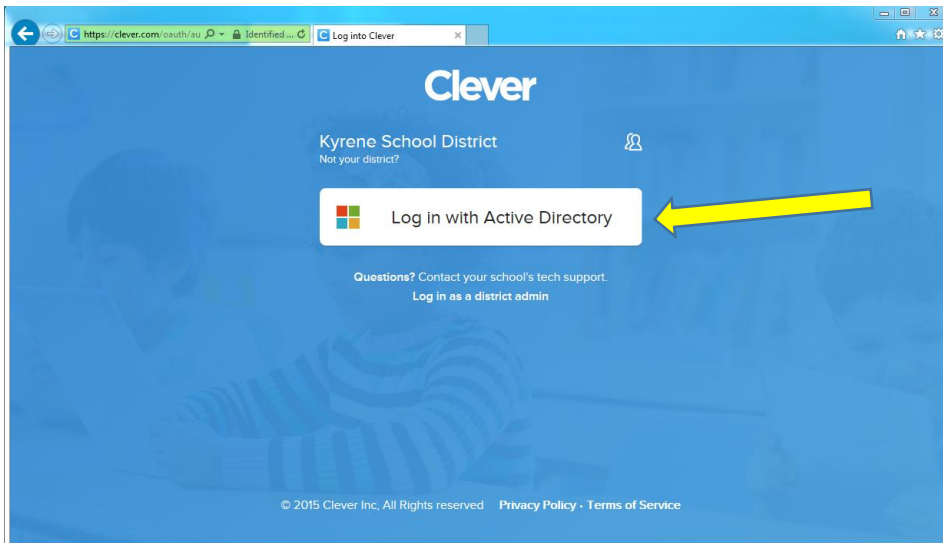


3) Click on the “Carnegie Learning Online” button

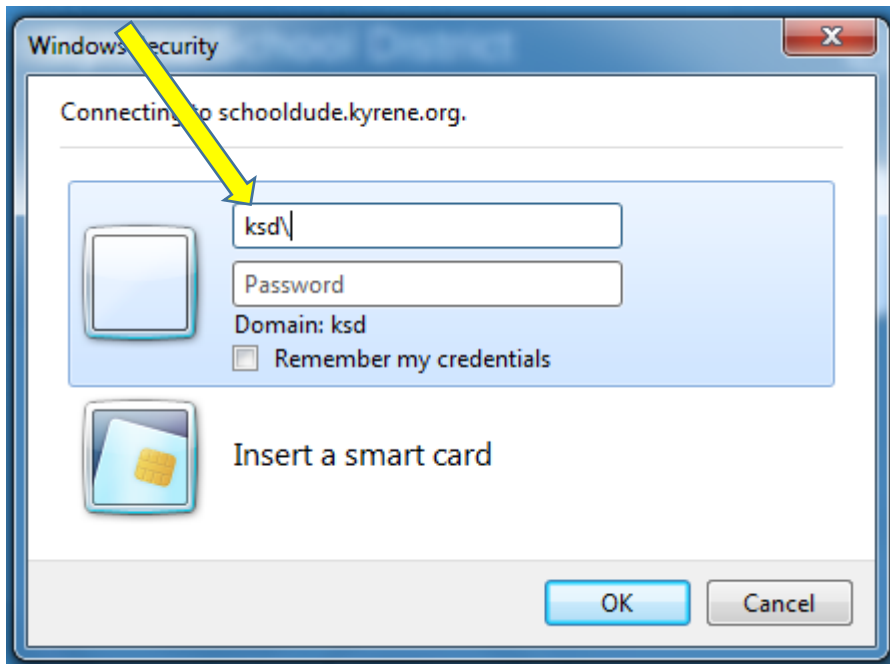
TEXTBOOK & ADDITIONAL RESOURCES		
The following resources may be specific to a class in which particular students are enrolled.		
 Arizona Department of Education Arizona State University Grades K-5	 Grades 6-8 Spanish	 Grades 6-8 Language Arts
 Grades K-5 Reading & Language Support	 Grades 6-8 Science & Social Studies	 Grades K-8
 Grades K-5	 Grades 4 and 6	 Grades 6-8
 Grades K-5	 Grades 6-8 open CHROME first and navigate back to this page	 Grades 6-8
 Dual Language Grades K-5	 Grades 6-8 open CHROME first and navigate back to this page	 Grades 6-8 Open in Internet Explorer Carnegie Resource Center *home logon ksd\student#



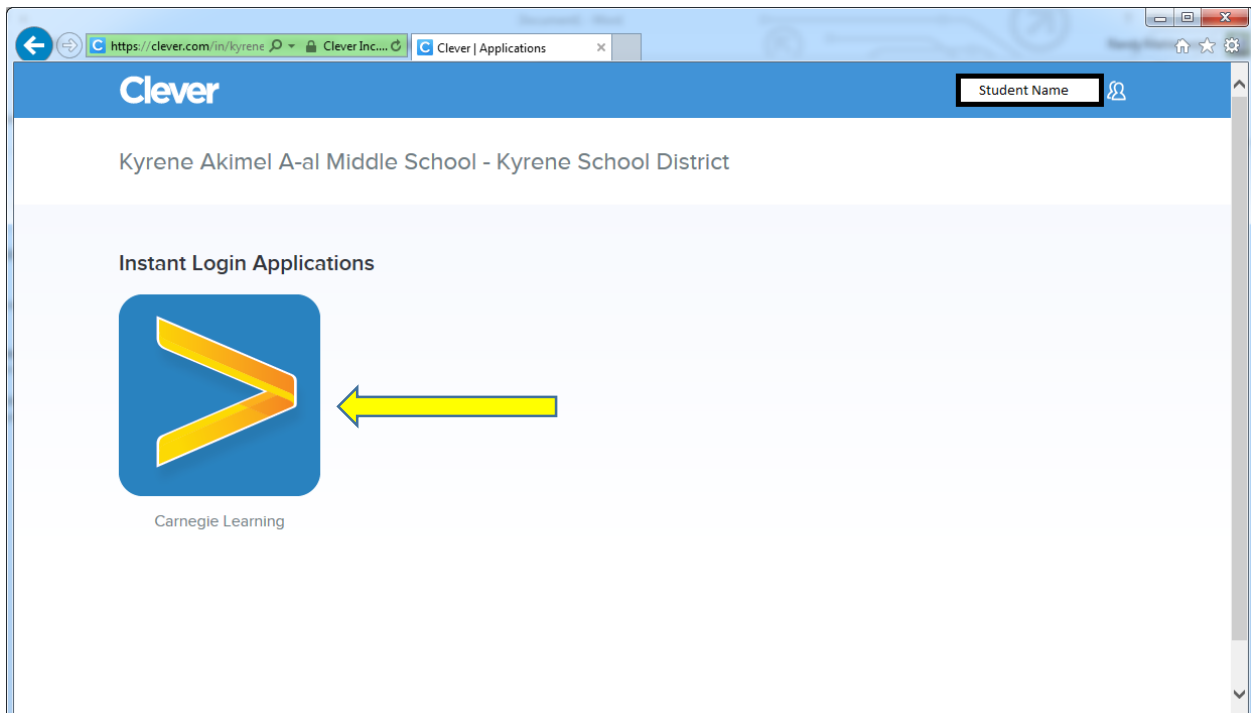
4) Click on “Log in with Active Directory”



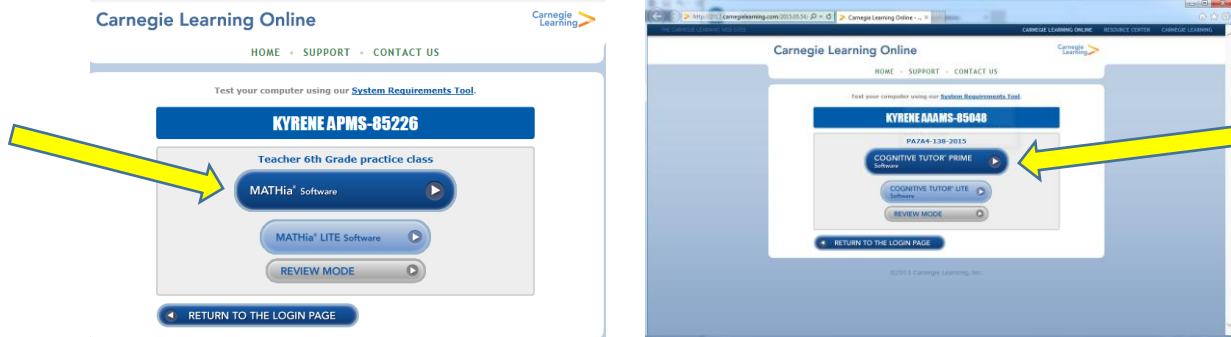
- 5) Type in “ksd\” then the student ID as username. For example: “ksd\654321”
Student passwords are the same as their Kyrene computer logon password.



- 6) Once the login is successful, they will see the Clever page with the Carnegie Learning app. Click on the Carnegie Learning button.



- 7) Click on the “MATHia” or “Cognitive Tutor Prime” software button to enter. The link is MATHia for Students in 6-8 courses, and Cognitive Tutor if student is in the Algebra 1 course.



- 8) Students will now see their home screen with the appropriate math modules for the course they are enrolled in.

a. MATHia view



b. Cognitive Tutor view

