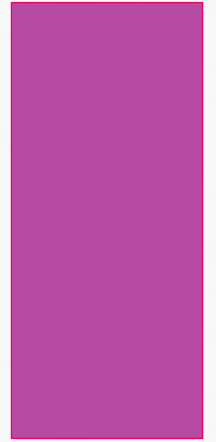
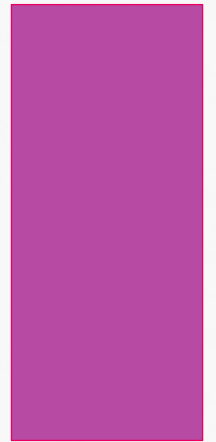


# WELCOME PARENTS AND NEW 6<sup>TH</sup> GRADERS!

MRS. AMELIA POWELL  
LANGUAGE ARTS &  
ADVANCED LANGUAGE ARTS  
TEAM 6A KNIGHTS  
ROOM 103



# Communication is Key



KYRENE.ORG

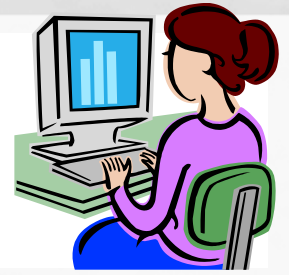
This is your best resource for the year!

<http://www.kyrene.org/Page/1>

# COMMUNICATIONS

- Parents should sign up for Aprende Newsletters on e-subscribe through [www.kyrene.org](http://www.kyrene.org)
- Parents will be asked to sign up for the team email distribution list. You will receive weekly updates on team assignments and happenings.
- Email Mrs. Staudohar [hstaudohar@kyrene.org](mailto:hstaudohar@kyrene.org)

# CHECK ONLINE GRADES!



- Please be aware that your student's grades are online and should be checked once a week.

## [Parent Vue](#)

- If you do not already have a password, please contact the school office for assistance. 480-541-6200
- Parents that are new to the district will receive a password in the mail two weeks after the start of school.
- Students can sign on to online grades using the computer student ID and password combination they created at school.

# STUDENTS ADVOCATE FOR THEMSELVES

- We welcome student interaction
- Students will learn to advocate for themselves:
  - Write the teacher a note
  - Email the teacher
  - Approach the teacher after instruction in class
  - Stay after class
  - ALab

# PROBLEM SOLVING

Once the student has approached the teacher, if further action is needed:

1. Student talks to their parent
2. Parent emails the teacher
3. Parent and teacher work toward a solution

# EMAIL

- Email is our preferred method of communication
- We will respond within 24 hours

Social Studies- [mdumais@kyrene.org](mailto:mdumais@kyrene.org)

Science – [cgibbs@kyrene.org](mailto:cgibbs@kyrene.org)

Math – [hstaudohar@kyrene.org](mailto:hstaudohar@kyrene.org)

Language Arts– [apowell@kyrene.org](mailto:apowell@kyrene.org)



# WEBSITES

- Teacher Websites:
  - Team Website
  - Assignment Calendar

<http://www.kyrene.org/Page/1>

# OVERVIEW OF 6<sup>TH</sup> GRADE LANGUAGE ARTS

## Reading:

- Literature study: *Bud, Not Buddy, The Girl Who Owned a City, Among the Hidden*
- Advanced Literature study: *The Martian Chronicles, The Year of the Hangman, Stories from Shakespeare*
- Various short stories and informational texts from the *Holt Elements of Literature* text will also be studied.

## Writing:

- Text-based written assessments
- Myth
- Personal narrative
- Autobiography
- Poetry
- Letter writing

## Speaking and Listening:

- Classroom discussion
- Group discussions (Socratic Circles)
- Jr. Great Books – style reading discussions
- Newscast and commercial presentations

## Language:

- Vocabulary: Students will learn 20 new words every two weeks. Various activities will be included to help students memorize these words. Students will also create flash cards that are meant to be studied at home.
- Grammar and usage: Students will learn about parts of speech and how to correctly compose a sentence through various grammar activities. Students will regularly have grammar homework.

# LANGUAGE ARTS REQUIREMENT

- Students are required to earn at least a D average for both fall and spring semesters.
- If this level is not reached, the student will be required to attend summer school so that they may master the skills needed to continue to the next grade level.



# WHO IS MRS. POWELL?

- 8th year teaching language arts at Aprende
- Graduate of Northern Arizona University
- Achieved a Masters in Education
- Advisor of *Jaguar Paw* newspaper
- Judge for the Aprende Spelling Bee
- Grew up in Michigan and Arizona (went to Thunderbird HS in North Phoenix)
- Married for (almost) 9 years
- One son, James who is almost 2 ½.
- Dog (Lucy) and cat (Lily)
- Hobbies: Reading (of course 😊), spending time with my family, writing/journaling, traveling, movie-going, swimming, shopping, and walking my dog.