

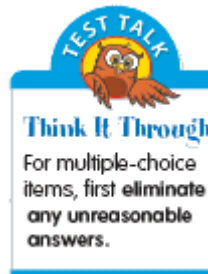
Click the print button from your browser.



Chapter 4 Section B Diagnostic Checkpoint

MULTIPLE CHOICE

- What is the quotient of $412 \div 54$? (4-4)
 A. 7 B. 7 R14 C. 7 R34 D. 8 R20
- What is the quotient of $972 \div 27$? (4-5)
 A. 30 B. 36 C. 40 D. 46



FREE RESPONSE

Find each quotient. (4-4)

3. $608 \div 19$ 4. $416 \div 53$ 5. $628 \div 32$ 6. $236 \div 42$

Find each quotient. (4-5)

7. $822 \div 38$ 8. $4,515 \div 21$ 9. $7,918 \div 37$ 10. $9,072 \div 28$

Use the most appropriate method to find each quotient. (4-6)

11. $7,200 \div 60$ 12. $42,000 \div 700$ 13. $43,680 \div 60$ 14. $21,714 \div 47$

Find each quotient. (Hint: each quotient should contain a zero.) (4-7)

15. $4,428 \div 41$ 16. $8,526 \div 42$ 17. $8,829 \div 84$ 18. $7,750 \div 25$

19. Write and answer the hidden question or questions in the problem and then solve the problem. Write your answer in a complete sentence.

Billy Bob wins \$500 in a school raffle. He decides to keep \$120 for himself, give \$60 to charity, and divide the rest equally among his 5 brothers and sisters. How much will each brother or sister receive from Billy Bob?

Total amount Billy Bob won:	\$500
Amount Billy Bob keeps:	\$120
Amount Billy Bob gives to charity:	\$60

Writing in Math

- Without dividing, tell whether $8,422 \div 38$ is more or less than 200? How did you decide on your answer? (4-4)
- Explain how you can decide when a quotient must contain a zero? (4-7)
- Why did you need to find and answer the hidden questions in Exercise 19 above? (4-8)