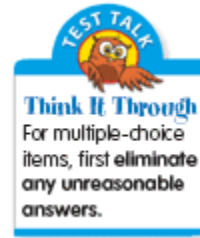




## Chapter 2 Section A Diagnostic Checkpoint

### MULTIPLE CHOICE

- Which two numbers have a product of 24,000? (2-1)  
A. 60 and 40    B. 4 and 600    C. 60 and 400    D. 600 and 400
- Which is the best estimate of  $11 \times 57 \times 3$ ? (2-2)  
A. 1,500    B. 1,800    C. 15,000    D. 18,000



### FREE RESPONSE

Find each product. Use patterns and properties to compute mentally. (2-1, 2-5)

3.  $7 \times 600$       4.  $20 \times 0$       5.  $800 \times 40$       6.  $90 \times 3 \times 30$

Estimate each product. (2-2)

7.  $41 \times 2 \times 82$       8.  $7 \times 98 \times 12$       9.  $30 \times 29 \times 67$       10.  $17 \times 83 \times 54$

Use the Distributive Property to multiply mentally. (2-3)

11.  $52 \times 4$       12.  $6 \times 198$       13.  $8 \times 302$       14.  $12 \times 25$

Find each product. Estimate to check that your answer is reasonable. (2-4)

15. 
$$\begin{array}{r} 67 \\ \times 59 \\ \hline \end{array}$$
      16. 
$$\begin{array}{r} 132 \\ \times 8 \\ \hline \end{array}$$
      17. 
$$\begin{array}{r} 419 \\ \times 65 \\ \hline \end{array}$$
      18. 
$$\begin{array}{r} 893 \\ \times 240 \\ \hline \end{array}$$

19. The picture at the right shows a towel with a customer's initials. However, the initials were put on in the wrong order. What are the other ways the letters could be arranged? (2-6)



### Writing in Math

- Estimate to decide if  $26 \times 74 \times 30$  is greater than or less than 72,000. Tell how you decided. (2-2)
- Explain how to use the Distributive Property to find  $805 \times 6$ . (2-3)
- If you had to multiply  $941 \times 536$ , what method would you use? Explain. (2-5)